

## What you can do

### Public



Members of the public should stay tuned to the latest news from the SIE Fund as social innovation projects need your support to be sustainable.



### Social Innovators



If you have innovative ideas for poverty alleviation and prevention of social exclusion, we encourage you to apply for support under Innovative Programmes.



### Experts & Entrepreneurs



Business executives and professionals with expertise and/or network relating to social entrepreneurship should consider joining our Capacity Building programmes as mentors or advisors.



## Get Connected



[www.sie.gov.hk](http://www.sie.gov.hk)



[www.facebook.com/sie.fund](http://www.facebook.com/sie.fund)



[www.instagram.com/siefundhk](http://www.instagram.com/siefundhk)



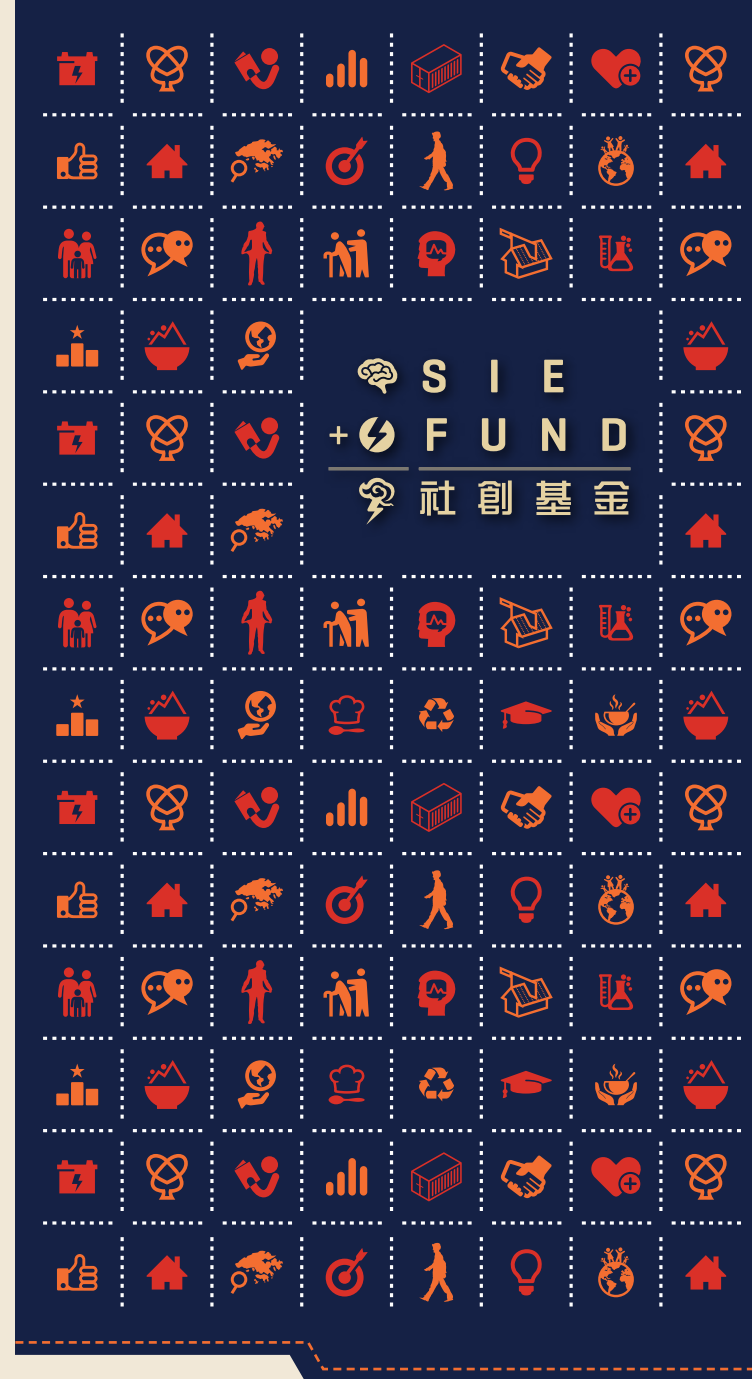
[www.youtube.com/siefund](http://www.youtube.com/siefund)



(852) 2165 7389



[siefund@effo.gov.hk](mailto:siefund@effo.gov.hk)



Pitch in to develop innovative solutions for social issues

# Who We are

# Our Work

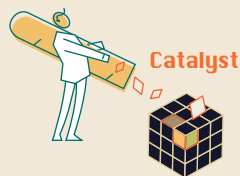


## Catalyst for Social Innovation

The Social Innovation and Entrepreneurship Development Fund (SIE Fund) seeks to be a catalyst for social innovation in Hong Kong. By supporting cross-sector collaboration and capacity building, the SIE Fund aims to build an ecosystem where social entrepreneurs can thrive and their innovative ideas, products and services can help alleviate poverty, promote social inclusion, as well as enhance the well-being and cohesion of the society.

The Fund contributes to poverty alleviation through diverse approaches including developing the infrastructure of support for social innovation and entrepreneurship, leveraging its resources to bring new actors into the field and to help existing agencies scale up promising experiments, encouraging collective impact approaches to address particular aspects of poverty and the needs of the disadvantaged, and advocating the concept of shared value among the business sector.

Established with an allocation of HK\$500 million from the Lotteries Fund, the SIE Fund was inaugurated in September 2013 and is overseen by the SIE Fund Task Force under the Commission on Poverty.



## Three Priority Areas

### Research

To identify areas of needs and corresponding solutions



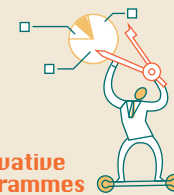
### Capacity Building

To foster the development of the ecosystem by nurturing social entrepreneurs, enhancing the capacity of the sector, and facilitating cross-sector collaboration



### Innovative Programmes

To provide funding and other support for social entrepreneurs and innovative projects of various stages, from idea generation to scale-up



## Five Major Initiatives and Strategies

- Drive Results from Flagship Project and Intermediary Programme
- Establish an Idea and Solution Bank
- Engage the Business Sector
- Identify and Nurture Sector / Segment Leaders
- Raise Public Awareness and Support

Please visit the SIE Fund website for more information about social innovation and the Fund:

