



# Alleviating Poverty through Three Priority Action Areas on Innovation

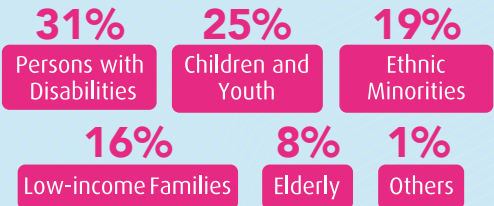
More than HK\$250 million has been allocated to various initiatives to date



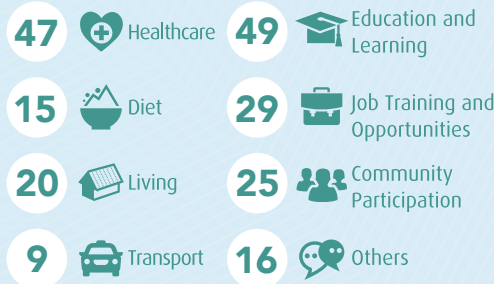
Social Innovation and Entrepreneurship Development Fund

## INNOVATIVE PROGRAMMES Number of Beneficiaries over 70 000

### Beneficiary Groups



### Service Nature



## RESEARCH Number of Beneficiaries over 144 000

### Applied Research in Social Innovation

- Cover medical care, education and learning, community participation; aim to facilitate social inclusion through assisting beneficiaries to overcome barriers
- Beneficiaries: persons with mild neurocognitive disorder, stroke patients, elderly, persons with hearing, visual or speech impairment, ethnic minority students and women, autistic children, etc.

Total number of beneficiaries over **245 000**

## CAPACITY BUILDING Number of Beneficiaries over 31 000

### FOOD-CO Food Support Collaborative Platform

As of end of May 2020

Food Donation Transactions	Service Points	Corporate Donors
<b>4 400+</b>	<b>270+</b>	<b>600+</b>
Weight of Food	Worth of Food	
approx. <b>760</b> Tonnes	approx. <b>65</b> million HKD	

- To enhance efficiency and effectiveness of food support service through strengthening collaboration



### Community Housing Movement

Target to:

Benefit **1 000** low-income families

Provide **500** units

- **Close to 370** families moved into affordable transitional accommodation under projects currently run by **10** social service agencies



### Social Innovation Design Lab

**1 000** design students

**400** senior citizens

- Co-creating to inspire innovative ideas for addressing issues of ageing: attitude towards death; bringing dementia patients back to community; ageing with grace and meaning

