



Alleviating Poverty through Three Priority Action Areas on Innovation

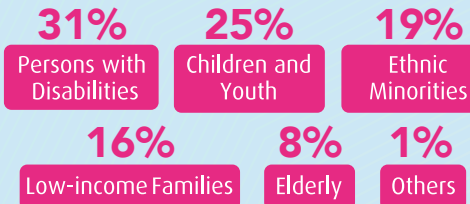
Approximately HK\$200 million has been allocated to various initiatives to date



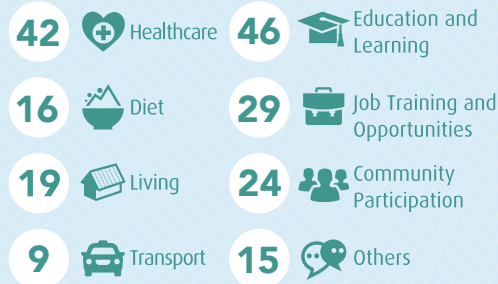
Social Innovation and Entrepreneurship Development Fund

INNOVATIVE PROGRAMMES Number of Beneficiaries over 70 000

Beneficiary Groups



Service Nature



RESEARCH Number of Beneficiaries approx. 78 000

Applied Research in Social Innovation

- Cover medical care, education and learning, community participation; aim to facilitate social inclusion through assisting beneficiaries to overcome barriers
- Beneficiaries: persons with mild neurocognitive disorder, stroke patients, elderly, persons with hearing, visual or speech impairment, ethnic minority students and women, autistic children, etc.

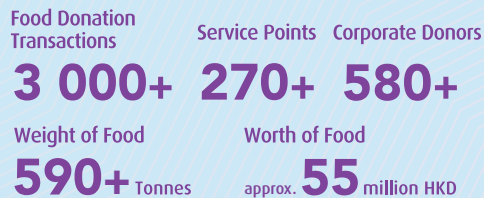


Total number of beneficiaries approx. **180 000**

CAPACITY BUILDING Number of Beneficiaries over 31 000

FOOD-CO Food Support Collaborative Platform

As of end of Feb 2020



- To enhance efficiency and effectiveness of food support service through strengthening collaboration



Community Housing Movement

Target to:

Benefit **1 000** low-income families
Provide **500** units

- More than 320 families moved into affordable transitional accommodation under projects currently run by 10 social service agencies



Social Innovation Design Lab

1 000 design students
400 senior citizens

- Co-creating to inspire innovative ideas for addressing issues of ageing: attitude towards death; bringing dementia patients back to community; ageing with grace and meaning

