



# Alleviating Poverty through Three Priority Action Areas on Innovation

More than HK\$290 million has been allocated to various initiatives to date

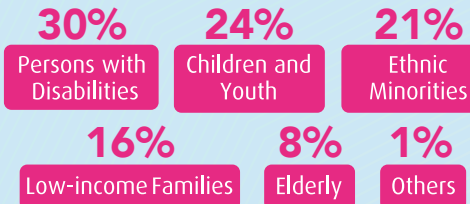


Social Innovation and Entrepreneurship Development Fund

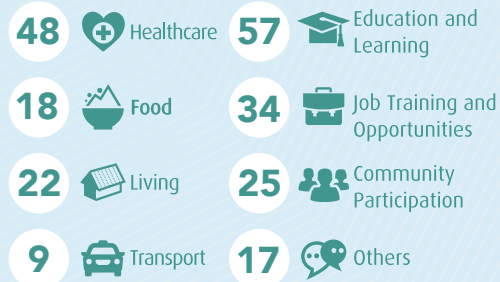
## INNOVATIVE PROGRAMMES

Number of Beneficiaries approx. **73 000**

### Beneficiary Groups



### Service Nature



## RESEARCH

Number of Beneficiaries over **144 000**

### Applied Research in Social Innovation

- Cover medical care, education and learning, community participation; aim to facilitate social inclusion through assisting beneficiaries to overcome barriers
- Beneficiaries: persons with mild neurocognitive disorder, stroke patients, elderly, persons with hearing, visual or speech impairment, ethnic minority students and women, autistic children, etc.



Total number of beneficiaries approx. **250 000**

## CAPACITY BUILDING

Number of Beneficiaries over **31 000**

### FOOD-CO Food Support Collaborative Platform

As of end of August 2020

Food Donation Transactions    Service Points    Corporate Donors

**6 500+**    **280+**    **620+**

Weight of Food    Worth of Food  
over **1 000** Tonnes    over **80** million HKD

- To enhance efficiency and effectiveness of food support service through strengthening collaboration



### Community Housing Movement

Target to:

Benefit **1 000** low-income families

Provide **500** units

- Over **400** families moved into affordable transitional accommodation under projects currently run by **13** social service agencies



### Social Innovation Design Lab

**1 000** design students  
**400** senior citizens

- Co-creating to inspire innovative ideas for addressing issues of ageing: attitude towards death; bringing dementia patients back to community; ageing with grace and meaning

