



# Alleviating Poverty through Three Priority Action Areas on Innovation

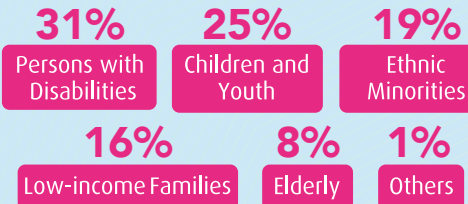
Approximately HK\$200 million has been allocated to various initiatives to date



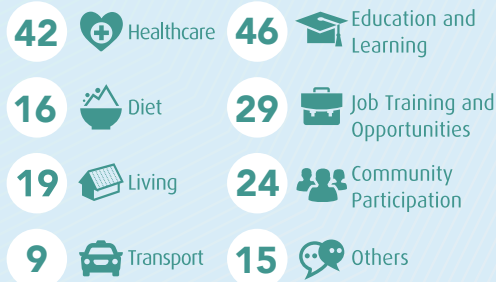
Social Innovation and Entrepreneurship Development Fund

## INNOVATIVE PROGRAMMES Number of Beneficiaries over 70 000

### Beneficiary Groups



### Service Nature



## RESEARCH Number of Beneficiaries approx. 78 000

### Applied Research in Social Innovation

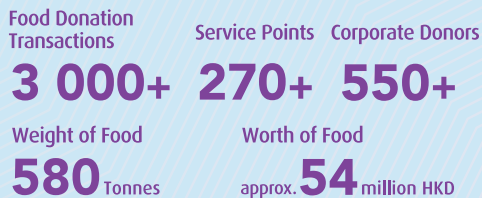
- Cover medical care, education and learning, community participation; aim to facilitate social inclusion through assisting beneficiaries to overcome barriers
- Beneficiaries: persons with mild neurocognitive disorder, stroke patients, elderly, persons with hearing, visual or speech impairment, ethnic minority students and women, autistic children, etc.

Total number of beneficiaries approx. **180 000**

## CAPACITY BUILDING Number of Beneficiaries over 31 000

### FOOD-CO Food Support Collaborative Platform

As of end of Dec 2019



- To enhance efficiency and effectiveness of food support service through strengthening collaboration



### Community Housing Movement

Target to:

Benefit **1 000** low-income families  
Provide **500** units

- About 310 families moved into affordable transitional accommodation under projects currently run by 10 social service agencies



### Social Innovation Design Lab

**1 000** design students  
**400** senior citizens

- Co-creating to inspire innovative ideas for addressing issues of ageing: attitude towards death; bringing dementia patients back to community; ageing with grace and meaning

